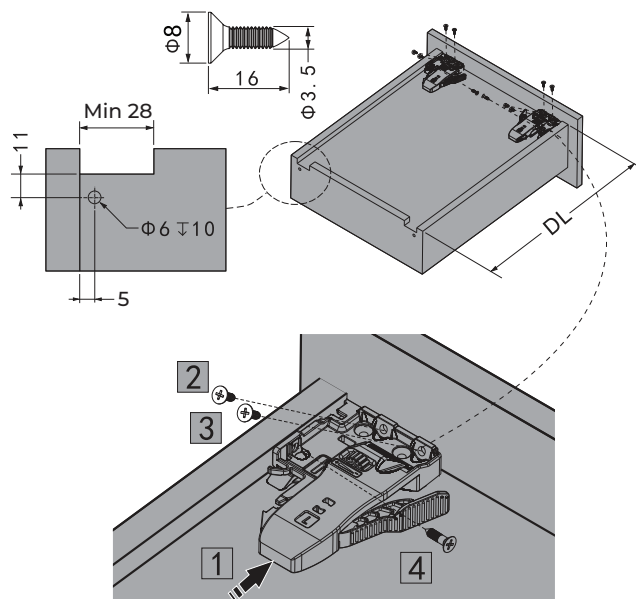


### Step 3. Prepare the Drawer

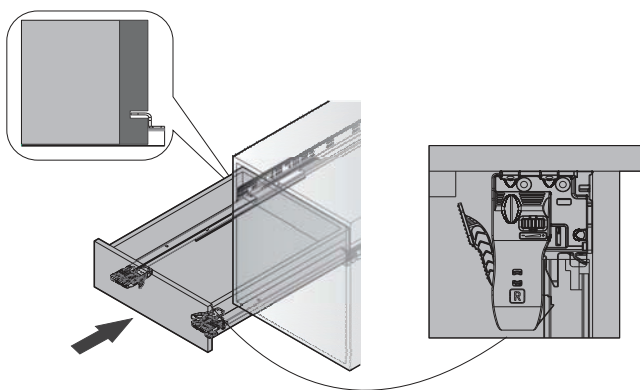
- Hold the locking device flush against the drawer bottom, side, and front.
- Insert screw #2 first and check it's tight.
- Then insert screws #3 and #4 to secure the device firmly.
- Repeat for the other side of the drawer.

*Note: Insert screws at the lowest angle possible so the locking device sits flush with the drawer bottom*



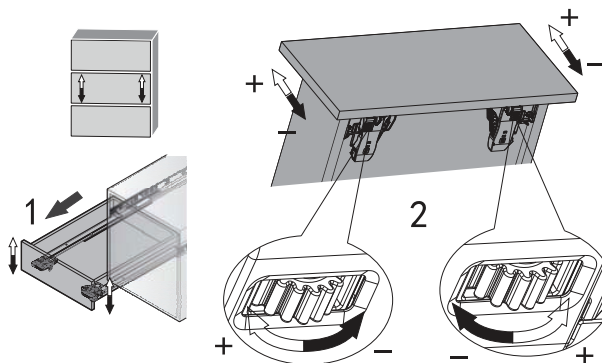
### Step 4. Attach the Drawer to the Runners

- Align the drawer with the cabinet-mounted runners.
- Gently push the drawer in until you hear or feel a click - this means the locking devices have engaged.
- That's it - your drawer is now installed!



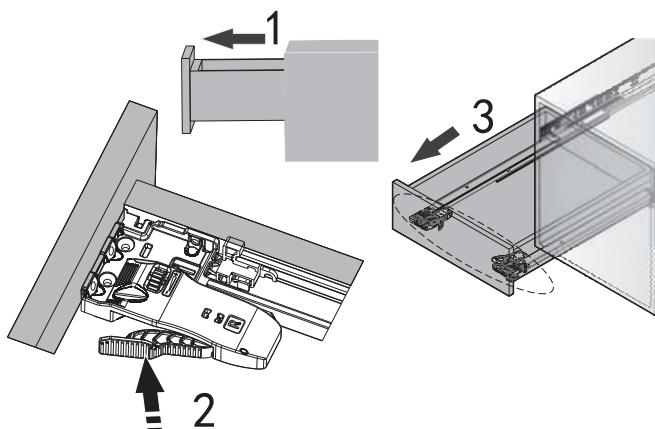
### Step 5: Adjust the Drawer Height (if needed)

- Underneath the drawer, locate the adjustment wheels on each locking device.
- Turn clockwise (+) to raise the drawer.
- Turn counterclockwise (-) to lower the drawer.
- You can adjust the height up to 3mm without tools, allowing you to perfect alignment with other drawers or the cabinet front.



### Step 6: Remove the Drawer (Optional)

- Fully extend it.
- Press both levers on the locking devices simultaneously.
- Pull the drawer out gently.
- This is useful for readjustment or cleaning.



Sept. 2025

### What makes this Runner so Special?

- **More sensitive soft close mechanism** with smooth and noiseless closing
- **Height Adjustment:** 0 - 3mm
- **High Load Capacity:** Supports up to 35kg with ease.
- **Proven Durability:** Tested to 50,000 cycles for long-lasting performance.
- **Easy Adjustments:** Tool-free vertical and horizontal alignment for quick, precise fitting.

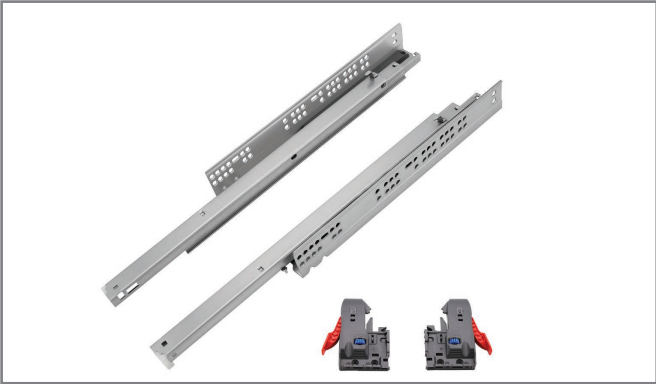
DIY Installation Guide

## Undermount Runner with Soft Close



**Gelmar**

# Undermount Runner - Soft Close



## Tools & Materials Needed:

- Soft-close undermount runners (left & right set)
- 2D locking devices (left & right)
- Screws (recommended: 6 x 16mm undercut)
- Screwdriver or drill
- Measuring tape or ruler

## Product Information:

Item No.	Drawer Length (mm)	Slide Length (mm)	Pull-out Length (mm)	Min. Cabinet Depth (mm)
7064	350	357	345	372
7071	400	407	395	422
7060	450	457	435	472
7061	500	507	485	522

## Abbreviations:

ICD = Internal cabinet depth  
ICW = Internal cabinet width  
DL = Drawer length  
IDW = Internal drawer width  
X = Drawer front thickness

## Step 1.

### Prepare the Cabinet

Follow these formulas to calculate the minimum cabinet depth, drawer length, and drawer width. These formulas ensure proper fit and full extension of the drawer.

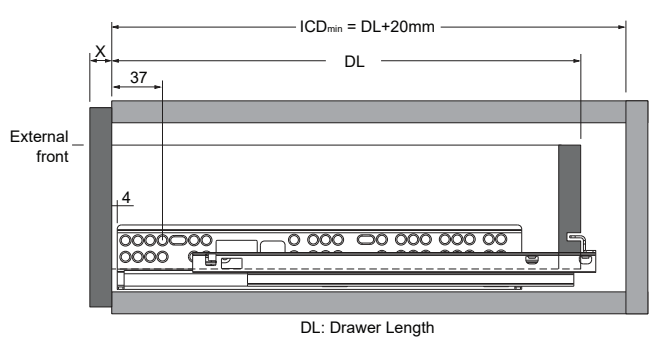
### Standard External Drawer Installation

- Minimum (ICD) =  $DL + 22\text{mm}$
- Internal Drawer Width (IDW) =  $ICD - 42\text{mm}$

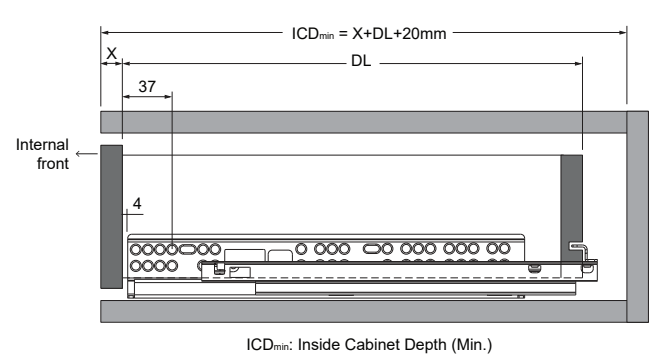
### Internal Drawer Installation

- Minimum (ICD) =  $X + DL + 25\text{mm}$   
(where X = drawer front thickness)
- Internal Drawer Width (IDW) =  $ICD - 42\text{mm}$

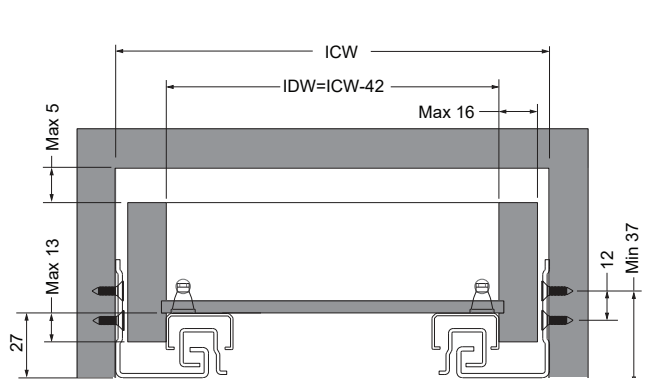
# External Drawer Front



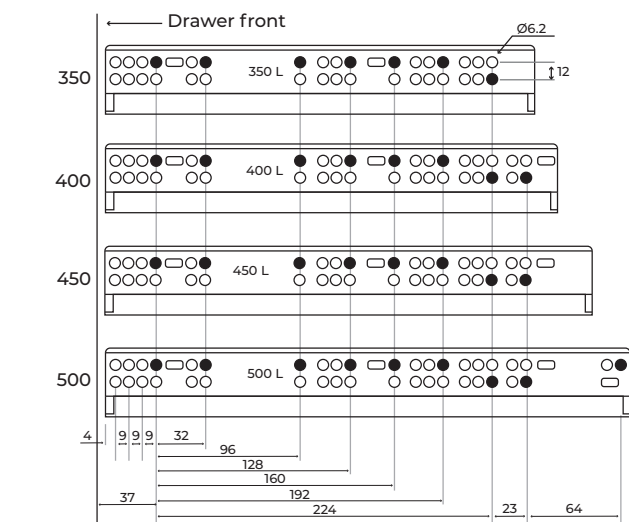
# Internal Drawer Front



# Carcass Design Criteria



# Hole Pattern for Installation



## Step 2.

### Mark and Install Runners in the Cabinet

- Refer to the screw hole positions diagram (above) and measure carefully from the front edge of the cabinet.
- Fix both the left and right runners securely and level on the cabinet side walls.

*Tip: Use a spirit level to ensure the runners are perfectly aligned for smooth push-open action.*

